

Addlogy EOD/IED System

New generation of radiological
technology & engineering!



New generation of radiological technology & engineering!

The key members of Addlogy have been developing high radiological technology during over 10 years before establishment of Addlogy and succeeded to establish Addlogy with some valuable R&D results related to security equipment, industrial device, healthcare device and other extra in 2022.

Through supply of our product we are trying to contribute on realization of more safe security system with free from terror, high efficient industrial product system, more accurate and comfortable medical imaging system and extra field required your core technology.



EOD/IED SYSTEM



EOD CR

- Dimensions : 420x80x300mm
- Weight : 10Kg
- indicator : White OLED display
- Interface : Ethernet
- Battery : Available 3 hours continuous scanning
- Scanning Speed : Within 40 seconds for 10x12inch and within 50 Seconds for 14x17inch



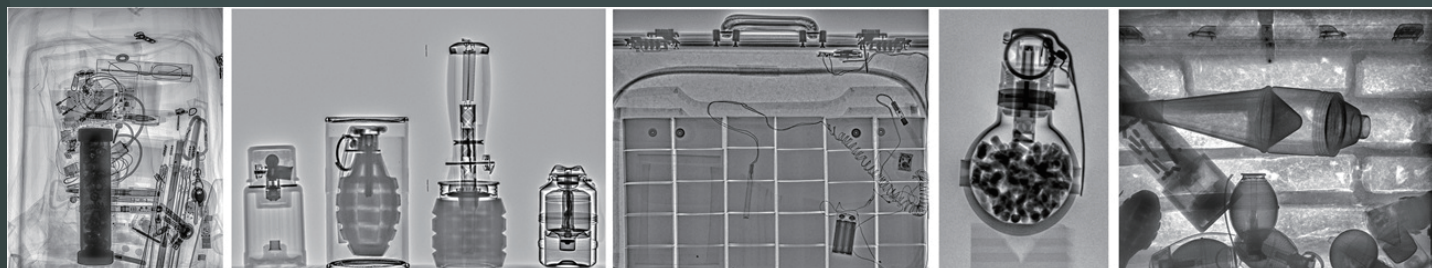
EOD DR

- Dimensions : Less than 500x500x25mm
- Weight: Less than 5.5Kgs
- Resolution : Over 120 μ m
- Wire and wireless : In the distance of over200 meter in case of wire and over 100 meter in case of wireless, the system is interconnected among X-ray, DR detector, DR controller and laptop
- DR detector has been passed the drop test under the condition over IP64 and over 1M height.



DR Controller

- Dimensions : 70 x 40 x 100mm (Excluding antenna)
- Weight : 0.6Kg
- Indicator : White OLED display
- Distacne of wireless connection About 200m under normal condition
- Available to conncet with CR, DR, Laptop and XRS
- Available to photography with 1 Plus
- Available to photography with 1 Puls Split
- Automatic setting the lead time for getting image per XRS Plus
- Battery : 2 Hours
- Available to install XRS with Picatinny rail



X-RAY

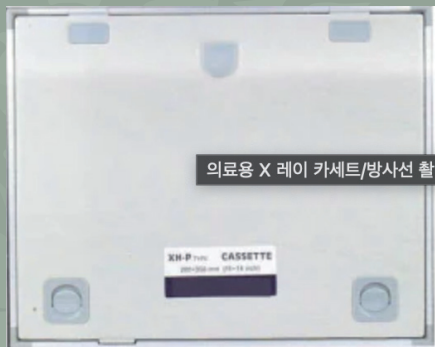


- X-ray penetrating power : In case of steel plate, should be over 1 inch.
- Weight : Less than 6 Kgs including battery.
- Dimensions : Less than 420 x 129 x 200 mm (L x W x H)
- Power : 150~270kVp and less than 1 Ma and should be available to control the output power through LCD controller.
- Life time of tube : Over 100,000 Pulse
- Delay time : Should be available to control through user's setting up. (for emergency and time setting)
- Operating time : Over 4 hours under waiting mode.
- Electric power : Rechargeable and attachable battery and recharging time should be within 4 hours after 100% discharged.

Laptop and tablet



- Storage : Over SSD256GB
- Screen size : Over 15 inch (Over 1,920 x 1,080 pixel)
- CPU/RAM : Over i7 Intel / Over 8 GB
- Operating system : Over Window 10
- ODD:DVD-RW : Record function with DVD and available to use external device
- Program : Available to operate CR and DR with the same program and color image showing.
- Automatic storage function : Available to storage the record automatically after taking photocopy. (Prevent the deletion by user's mistake)
- Power : Available to use over 2 hours after full recharge



Rigid Cassette

- 10 x 12 inch cassette
- 14 x 17 inch cassette

Image Plate

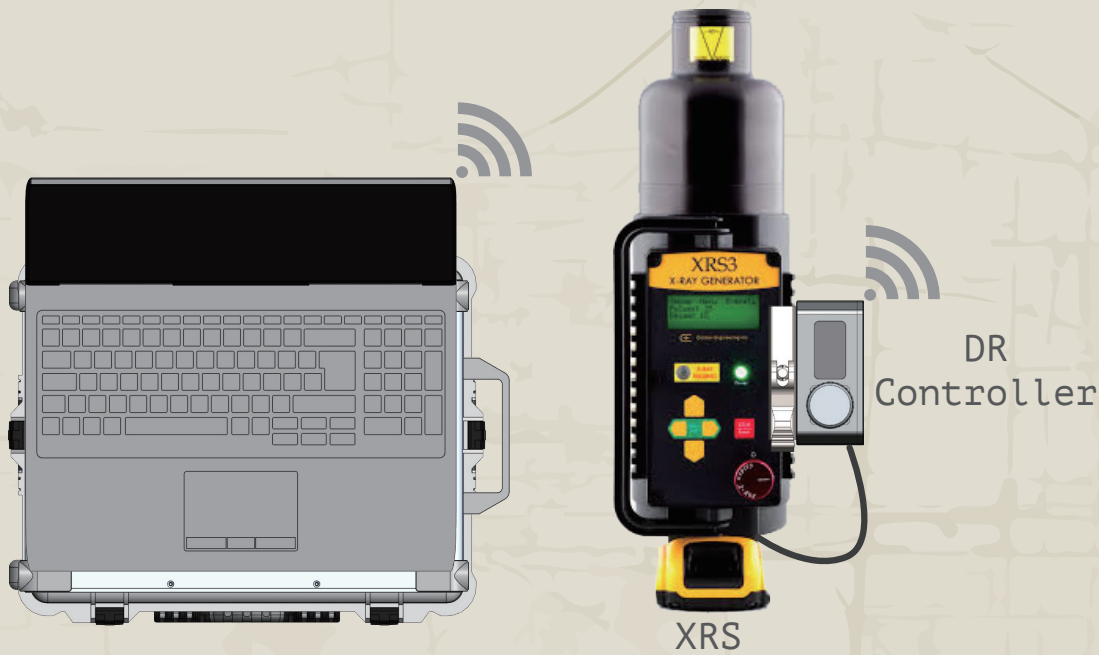
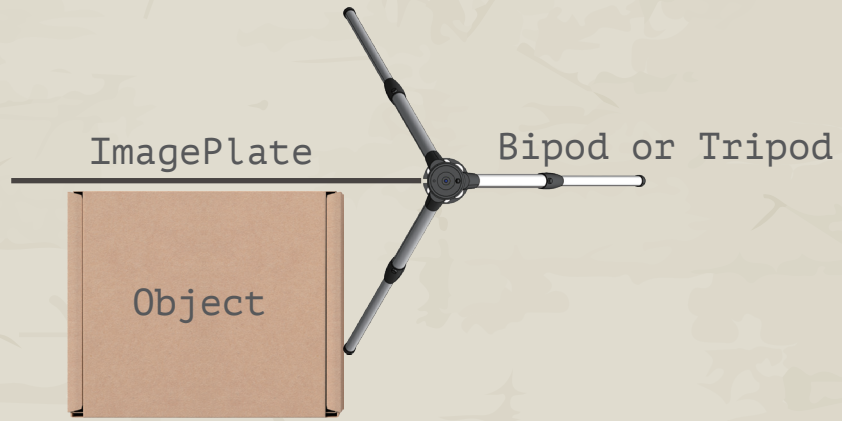
- Should be available to use over 1,000 times repeatedly to take the photocopy detonating fuse and or IED to be installed in strange object by using X-ray, the size of film should be 10 x 12 inch and or 14 x 17inch and the thickness should be less than 1 mm.



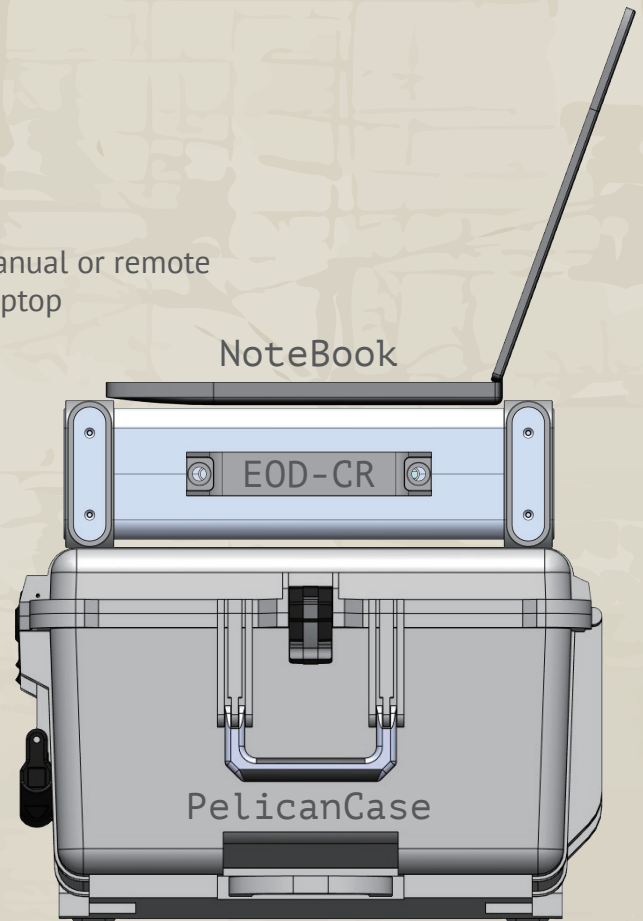
Flexible Cassette

- Should be protected against the light and shock from outside and supply more clear image than rigid cassette. The size of flexible cassette should be 10 x 12 inch or 14 x 17 inch and the thickness should be less than 1mm.

Sample of EOD system operation joined with CR Scanner

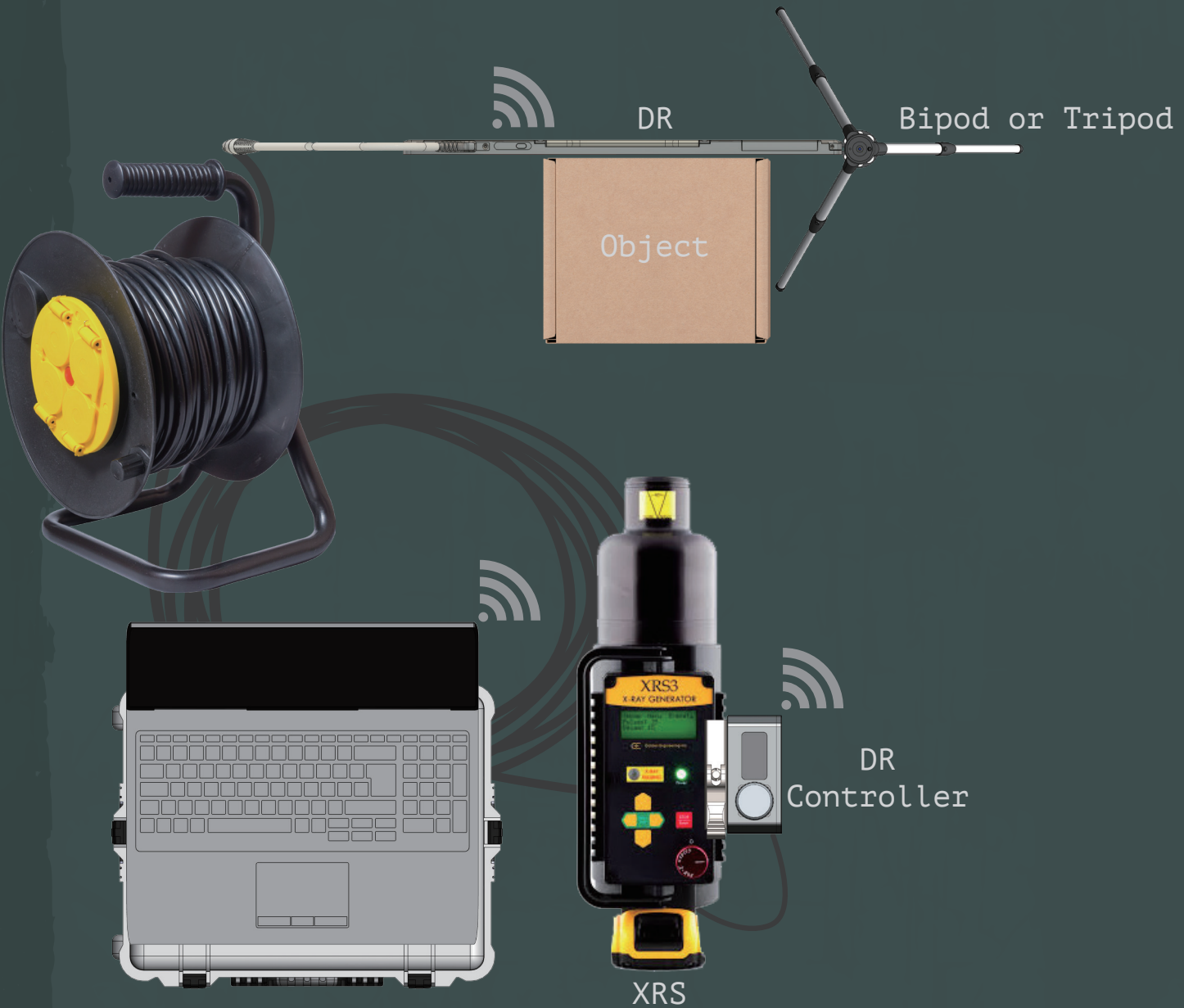


- X-ray exposure is available to make micro-setting by using manual or remote controller or console software. In case of micro-setting, the laptop and controller should be connected by wire and or wireless.
- Should be available to take photocopy by using so thin image plate under any condition of the gap between object and wall and without moving the object to any other available place to use DR dector.
- 1 pulse or 1 pulse split taking photocopy is available without any extra working step.
- Available to get out from risky and unsafe zone after taking photocopy promptly.
- If necessary, several times scanning is available without any deletion of image.
- Under jamming attack, available to use(wire).

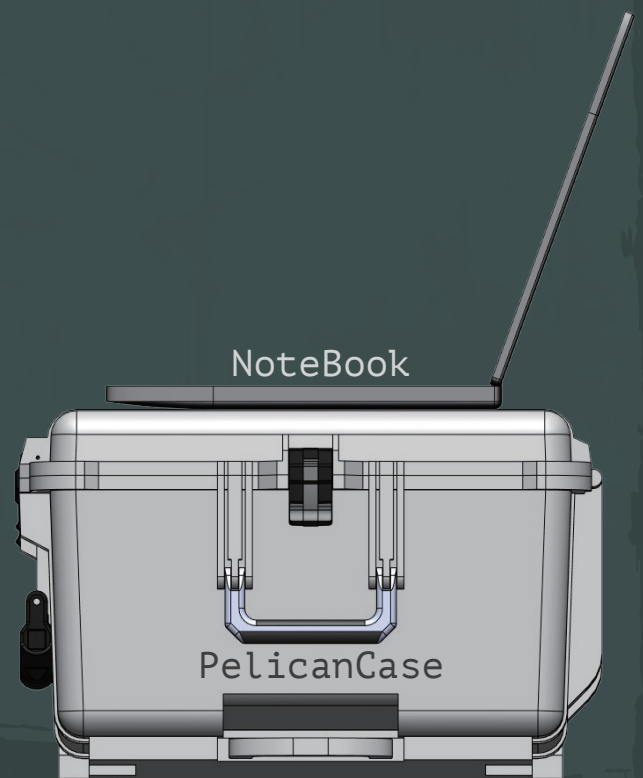


CR Operation

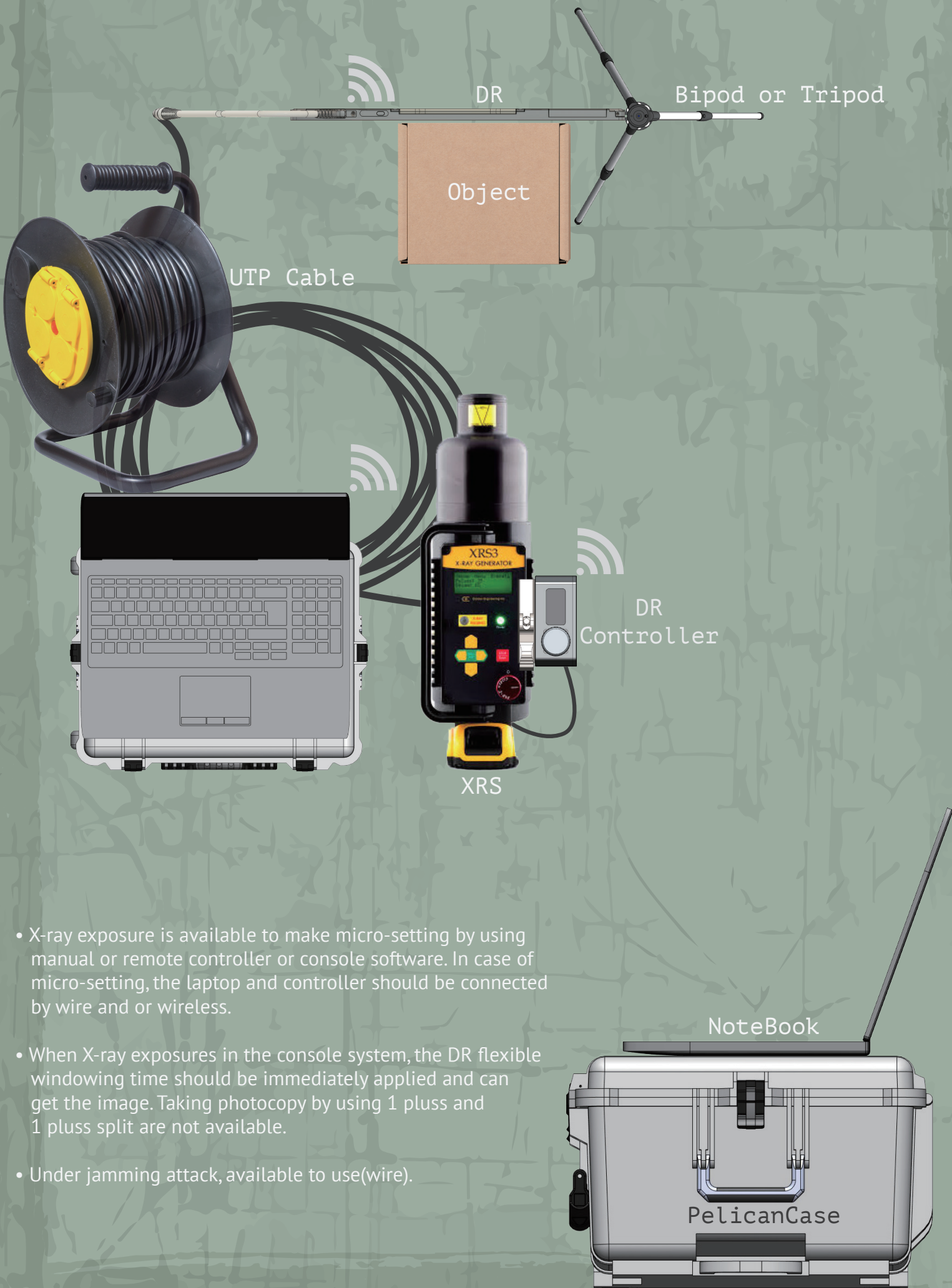
DR AED operation sample



- For X-ray exposure, the nominated manual type operation or remote controller should be used.
- Flexible windowing time is not applied as per the change of X-ray pulse under AED mode of DR.
- 1 pulse and 1 pulse split taking photocopy are not available.
- Under jamming attack, available to use(wire).



The operation sample for DR Trigger(wire and wireless)



- X-ray exposure is available to make micro-setting by using manual or remote controller or console software. In case of micro-setting, the laptop and controller should be connected by wire and or wireless.
- When X-ray exposures in the console system, the DR flexible windowing time should be immediately applied and can get the image. Taking photocopy by using 1 plus and 1 plus split are not available.
- Under jamming attack, available to use(wire).

ANY QUESTION?

Contact us now!



++82 (0)2 507 1312



www.addlogy.com



Room #207, Byucksan Digital Valley III, 271,
Digital-ro, Guro-gu, Seoul, Republic of Korea 08381

